

# suressmile technology

## This robot will make you smile!

You'll be on your way to a beautiful, healthy smile sooner than you thought possible. Average treatment time with suressmile is 34%\* less than conventional braces.

### suressmile treatment

#### STEP ONE: Advanced Imaging

suressmile creates a 3-D computer model of your bite by using advanced imaging technology to scan your teeth. The 3-D image can be captured with the OraScanner® or Cone Beam Computed Tomography (CBCT). The scan procedure is the beginning of your suressmile treatment.

#### STEP TWO: Prescriptive Planning

With the 3-D model, the doctor can now see your teeth from any angle and how they fit together. suressmile Treatment Planning software provides virtual simulation tools that allow your doctor to determine the final position of your teeth and the most effective plan for your unique treatment needs.

#### STEP THREE: Robotic Accuracy

Once your treatment plan is determined, suressmile directs a robot to bend a shape-memory alloy archwire according to your doctor's prescription. This wire is designed to deliver gentle forces needed to move your teeth consistently towards their desired positions.

### conventional treatment

In conventional orthodontics, a doctor uses a plaster model and 2-D x-rays to determine a general treatment plan.

The finishing positions for your teeth are developed over time by viewing progress at frequent monitoring visits. As a result, the finishing stage of treatment, where the fine alignments of your teeth occur, can take as long as the major adjustments.

Archwires are bent by hand at chairside during each appointment. These wires require continuous readjustment over the course of treatment to move your teeth to the desired position.

\*Based on a December 2009 comparison of 4,697 patients treated conventionally to 1,123 patients treated with suressmile.

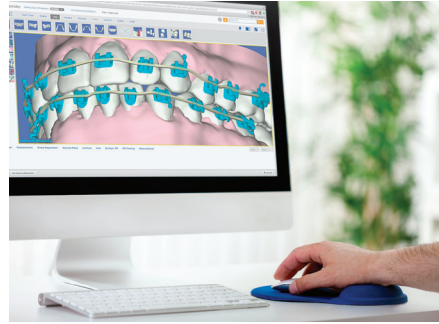
suressmile®

to be sure.



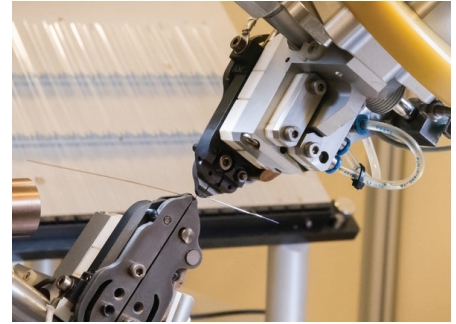
### Advanced imaging

The OraScanner is a handheld device that functions much like a 3-D digital camera, taking pictures of your teeth using flashing white light. The images create a 3-D model in real-time during the scanning procedure.



### Prescriptive planning

suresmile software provides virtual simulations for your doctor to review planning options and determine your optimum treatment. The target position of each tooth is planned in advance so you'll know what outcome to expect.



### Robotic Accuracy

Shape Memory alloy archwires are made by heating nickel titanium metal during the robotic customization process. These "smart" wires permanently retain your individual prescription and are activated by your own body heat.

## suresmile FAQs

### Is my orthodontist in control of my treatment?

Absolutely. In fact, suresmile technology provides your orthodontist greater control over your treatment than traditional braces.

### What is special about suresmile archwires?

A suresmile archwire is customized for your unique treatment plan by applying high temperatures and robotic precision to a wire made from shape memory alloy. Once the suresmile wire is inserted into your brackets, the shape memory alloy is activated by your body heat and "remembers" its design to move your teeth according to the treatment plan embedded in the bends of the wire. The material characteristics of shape memory alloy deliver gentle, constant forces as they move you teeth to their target positions.

### Is there a risk of damaging my teeth because they are moving faster?

suresmile wires do not move teeth any faster than the same wires used in conventional orthodontics. Your overall treatment time is shorter because suresmile moves your teeth more directly to their target positions.